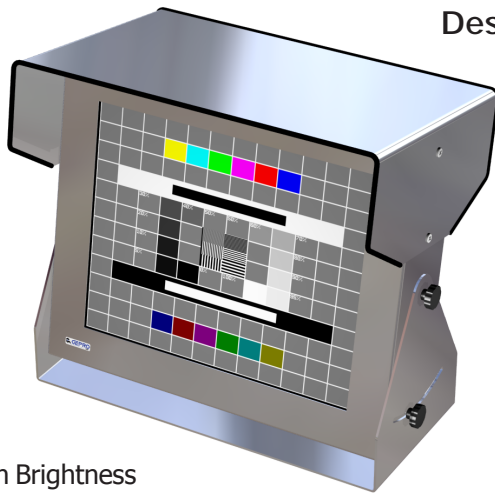
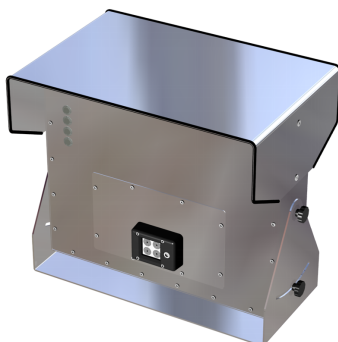
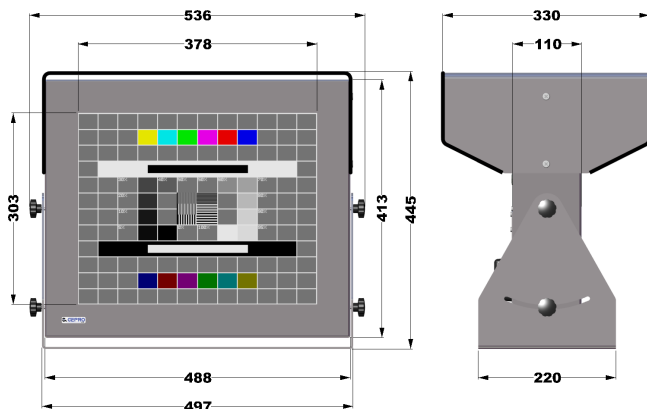


LCD19DX

Desktop



- High Brightness
- Seawater-proof
- Operation down to -20°C (-4°F)



Specifications

LCD Panel

Display Type	19" TFT LCD (transflective)
Resolution	1280 x 1024
Colors	16.7M
Brightness	> 800 cd/m ² (typ.)
Viewing Angle	178° H, 178° V (typ.)

Interface

VGA Input	HD-Sub 15pin, DVI
<i>option</i>	Video Input - Composite, S-Video, PAL/NTSC, SDI
OSD Control	Brightness, Contrast, Phase, Size, Sharpness, Auto Adjust, etc.

Mechanical

Construction	Stainless steel chassis
<i>option</i>	Steel/ Aluminium chassis powder coated, RAL 9005, 7035, 7032, etc.
Dimension	488 x 413 x 100mm (w/o mounting bracket and sun shield)
Mounting	VESA 100x100mm, 200x100mm (M4)
Protection	Anti glare protection glass IP65 all around

Electrical

Power Supply	115/230V AC, 50/60Hz
<i>option</i>	12V DC, 24V DC, 48V DC

Environmental

Temperature	Operating -20°C to 50°C
	Storage -20°C to 60°C
Humidity	max. 90% RH, non condensing

Options

Mounting bracket
Sun shield
other options on request

Accessories (included)

Power-cord, VGA-cable, DVI-cable