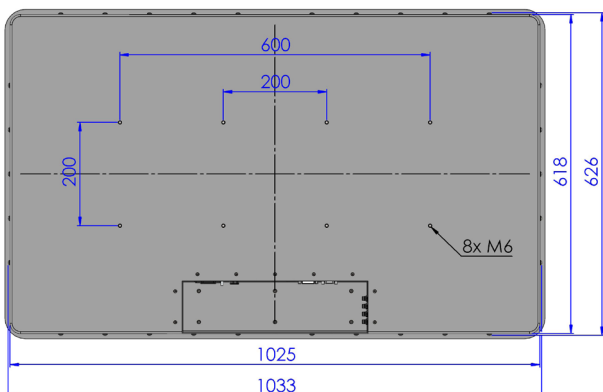


LCD42WOC^{-7F} Wallmount Vers.1



- Projected Capacitive Touchscreen
- Optional IP65 all around (waterproof)
- Optional wide temperature operating



Specifications

LCD Panel

Display Type	42" TFT LCD
Resolution	1920 x 1080
Colors	16.7M
Brightness	500cd/m ² (typ.)
<i>option</i>	Sunlight readable (>800cd/m ²)
Viewing Angle	178° H, 178° V (typ.)

Interface

VGA Input	HD-Sub 15pin, DVI
<i>option</i>	HDMI®, DisplayPort™
<i>option</i>	Video Input - Composite, S-Video, PAL/NTSC, SDI
OSD Control	Brightness, Contrast, Phase, Size, Sharpness, Auto Adjust, etc.

Mechanical

Construction	Powder coated aluminum front panel with recessed protection glass and PCAP touch screen, powder coated aluminium chassis RAL 9005, 7035, 7032, 9006, etc.
Color	
Front Dimension	1045 x 638 x 10mm
Cover Dimension	1025 x 618 x 139mm, (w/o screws)
Mounting	VESA 600 x 200mm (8 x M6)

Electrical

Power Supply	115/230V AC, 50/60Hz
<i>option</i>	24V, 48V DC

Environmental

Temperature	Storage -20°C to 60°C Operating 0°C to 45°C
Humidity	max. 90% RH, non condensing

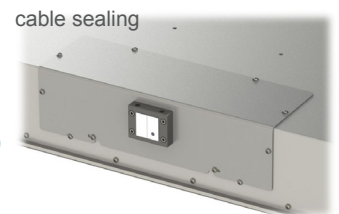
Options

Control	Infrared
Audio	2 x loudspeaker
Waterproof	IP65 all around
Wide Temperature	Operating -20°C to 50°C
AC adapter	
Cable sealing →	

other options on request

Accessories (included)

- Power-cord
- VGA-cable
- DVI-cable



The terms HDMI and HDMI High-Definition Multimedia Interface, and the HDMI Logo are trademarks or registered trademarks of HDMI Licensing, LLC in the United States and other countries. DisplayPort™ and the DisplayPort™ logo are trademarks owned by the Video Electronics Standards Association (VESA®) in the United States and other countries.

Dimensions in mm

8K

All rights reserved. Specifications subject to change without prior notice