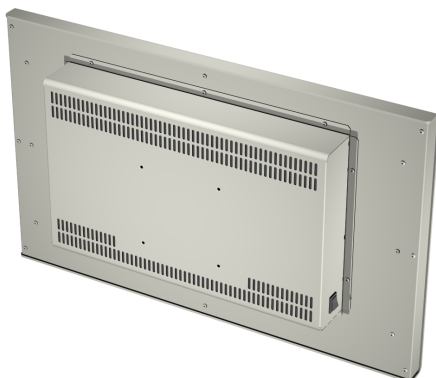
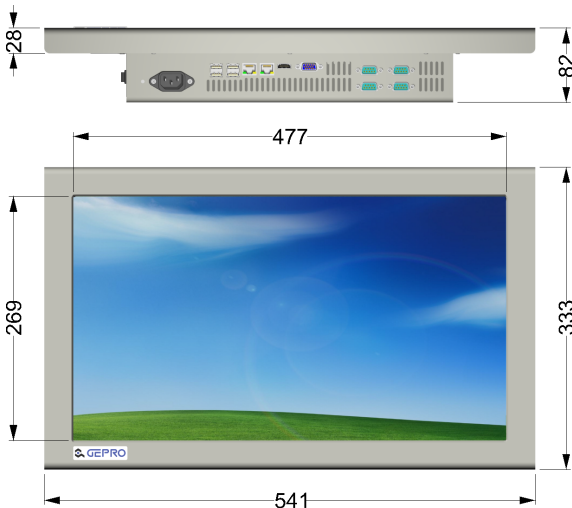


PPC21WDI-GM45

Desktop



- Optional Intel® Core™ 2 Duo, fanless operation
- Widescreen 16:9
- Optional Touchscreen



Specifications

LCD Panel

Display Type	21.5" TFT LCD
Resolution	1920 x 1080 (16:9)
Colors	16.7M
Brightness	250cd/m ² (typ.)
Contrast	1000:1 (typ.)
Viewing Angle	178° H, 178° V (typ.)

PC System

CPU	Intel® Celeron® 1,9 GHz
<i>option</i>	Intel® Core™ 2 Duo 2,26 GHz *
<i>option</i>	* fanless operation
Chipset	Intel® GM45
Memory	DDR2 RAM 2 GB, optional 4 GB
Storage	2.5" HDD, 80 GB, opt. up to 500 GB
<i>option</i>	2.5" SSD, 8 - 256 GB
I/O Port	2 x Gigabit-LAN
	4 x USB 2.0
	up to 4 x Serial Port
	1 x VGA (Dual Monitoring)
	1 x HDMI

Mechanical

Construction	Aluminium front panel and steel chassis powder coated
Color	RAL 9005, 7035, 7032, 9006, etc.
Dimension	541 x 333 x 82mm
Mounting	VESA 100 x 100mm (4 x M4)
Protection	IP41 on Frontside
<i>option</i>	Anti glare protection glass

Electrical

Power Supply	115/230VAC, 50/60Hz
<i>option</i>	12VDC, 24VDC, 48VDC

Environmental

Temperature	Operating	0°C to 45°C
<i>option fanless</i>	Operating	0°C to 40°C
	Storage	-20°C to 60°C
Humidity		max. 90% RH, non condensing

Options

Operation System	Windows® XP
	Windows® 7

Touchscreen, resistive
Integrated Wireless LAN
External RFID Reader Device
VESA-Mount Desktop-Stand
other options on request



Intel®, Intel® Celeron®, Intel® Core™ Duo, Intel® Core™2 Duo and Intel® Atom™ are trademarks of the Intel Corporation in the U.S. and other countries. Microsoft® and Windows® are trademarks of the Microsoft® Corporation in the U.S. and other countries.