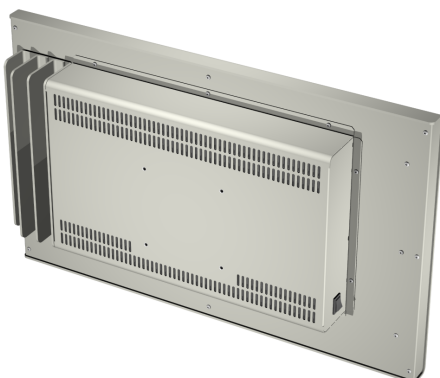
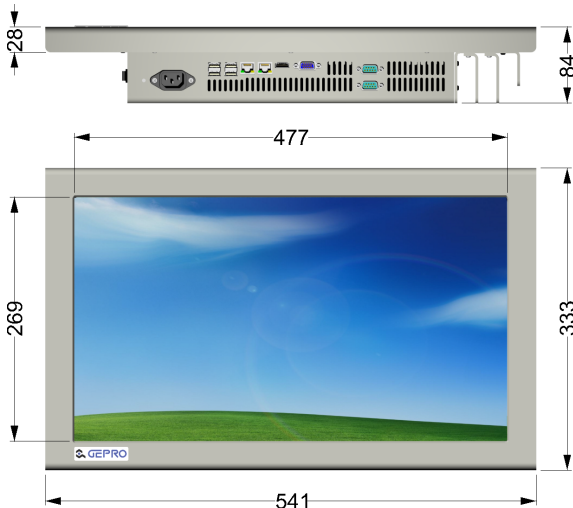


PPC21WDI-HM55

Desktop



- Optional Intel® Core™ i5
- Optional fanless operation
- Widescreen 16:9
- Optional Touchscreen



Specifications

LCD Panel

Display Type	21.5" TFT LCD
Resolution	1920 x 1080 (16:9)
Colors	16.7M
Brightness	250cd/m ² (typ.)
Contrast	1000:1 (typ.)
Viewing Angle	178° H, 178° V (typ.)

PC System

CPU	Intel® Celeron® 1.86 GHz
<i>option</i>	Intel® Core™ i5 2.4 GHz (* 2.67GHz)
<i>option</i>	fanless operation
Chipset	Intel® HM55
Graphic	Intel HD Graphics Controller
Memory	DDR2 RAM 2 GB, optional 4 GB
Storage	2.5" HDD, 80 GB, opt. up to 500 GB
<i>option</i>	2.5" SSD, 8 - 256 GB
I/O Port	2 x Gigabit-LAN
	4 x USB 2.0
	1 x VGA (Dual Monitoring)
	1 x HDMI
<i>option</i>	2 x Serial Port

Mechanical

Construction	Aluminium front panel and steel chassis powder coated
Color	RAL 9005, 7035, 7032, 9006, etc.
Dimension	541 x 333 x 84mm
Mounting	VESA 100 x 100mm (4 x M4)
Protection	IP41 on Frontside
<i>option</i>	Anti glare protection glass

Electrical

Power Supply	115/230VAC, 50/60Hz
<i>option</i>	12VDC, 24VDC, 48VDC

Environmental

Temperature	Operating	0°C to 45°C
<i>option fanless</i>	Operating	0°C to 40°C
	Storage	-20°C to 60°C
Humidity		max. 90% RH, non condensing

Options

Operation System	Windows® XP
	Windows® 7
Touchscreen, resistive	
Integrated Wireless LAN	
External RFID Reader Device	
VESA-Mount Desktop-Stand	
<i>other options on request</i>	



* Intel® Turbo Boost

Intel®, Intel® Celeron®, Intel® Core™ Duo, Intel® Core™2 Duo and Intel® Atom™ are trademarks of the Intel Corporation in the U.S. and other countries. Microsoft® and Windows® are trademarks of the Microsoft® Corporation in the U.S. and other countries.

Dimensions in mm

12A

All rights reserved. Specifications subject to change without prior notice