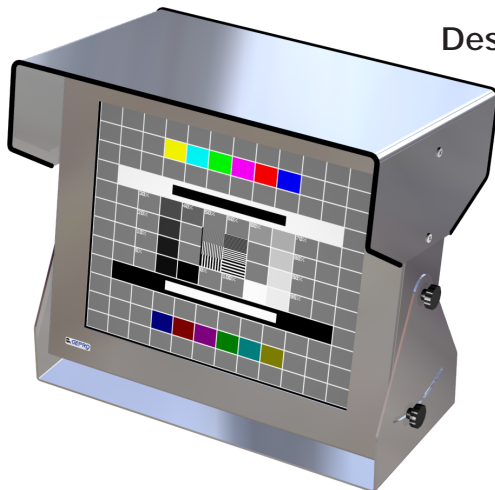
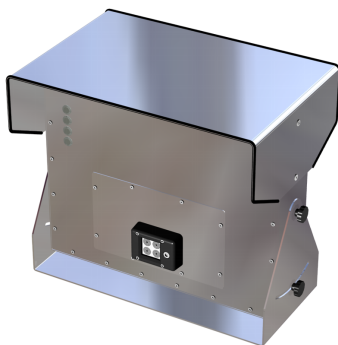
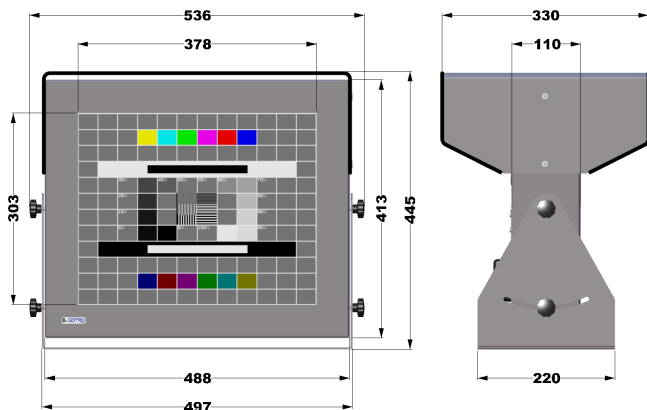


LCD19-DX

Desktop



- High Brightness
- Seawater-proof
- Operation down to -20°C (-4°F)



Specifications

LCD Panel

Display Type	19" TFT LCD (transflective)
Resolution	1280 x 1024
Colors	16.7million
Brightness	up to 950 cd/m ²
Contrast	1300:1 (typ.)
Viewing Angle	178° H, 178° V (typ.)

Interface

VGA Input	HD-Sub 15pin
<i>optional</i>	DVI
Video Input	Composite, S-Video, PAL / NTSC
<i>optional</i>	SDI
OSD Control	Brightness, Contrast, Phase, Size, Sharpness, Auto Adjust

Mechanical

Construction	Stainless Steel chassis
<i>optional</i>	Steel/ Aluminium chassis powder coated, RAL7032, 7035, 9005 etc.
Dimension	488 x 413 x 110mm (w/o mounting bracket and sun shield)
Mounting	Mounting Bracket
Protection	Anti glare protection glass IP65 all around

Electrical

Power Supply	110-230V AC, 50-60Hz
<i>optional</i>	12V DC
<i>optional</i>	24V DC
<i>optional</i>	48V DC

Environmental

Temperature	Operating -20°C to 50°C
	Storage -20°C to 60°C
Humidity	max. 90% RH, non condensing

Option

Mounting bracket
 Sun shield

Accessories

Power-cord, VGA-cable